

ATTENTION!

By accepting delivery of the enclosed goods, a binding agreement is created. If these terms and conditions are not suitable to you, you have the right to cancel your order by rejecting delivery in a timely manner and returning the unused goods to SLATOR, LLC.

We aim to give you all relevant information regarding your rights and obligations as a consumer. We care for our customers, and ask that you please read these terms carefully. Please do not hesitate to contact us with any questions that you may have. Contact information is located on our website: www.slator-usa.com.

ALL USERS OF THIS PRODUCT ARE SUBJECT TO THE FOLLOWING TERMS, CONDITIONS, AND APPLICABLE LAW.

Trademarks

All trademarks, service marks and trade names found on this product and its packaging are the trademarks or registered trademarks of SLATOR, LLC. Any other use, including but not limited to the reproduction, distribution, display or transmission of these marks is strictly prohibited, unless specifically authorized by SLATOR, LLC.

90 Day Limited Warranty

SLATOR warrants only to the original purchaser of this product from a SLATOR-authorized seller or distributor that this product will be free from defects in material and workmanship under normal use and service for 90 days after the date of purchase. SLATOR, LLC, at its sole option and discretion, shall repair or replace the defective unit covered by this warranty. Please retain the dated sales receipt as evidence of the original purchaser's date of purchase. You will need it for any warranty service. In order to keep this limited warranty in effect, the product must have been handled and used as prescribed by the instructions accompanying this product. This limited warranty does not cover any damage resulting from accident, misuse, abuse, or negligence. This limited warranty is non-transferable and does not apply to any purchaser who bought the product from a seller or distributor not authorized by SLATOR, LLC, including but not limited to purchases from Internet auctions. This warranty does not affect any other legal rights that you may have by operation of law.

DISCLAIMER OF WARRANTY

EXCEPT FOR THE LIMITED WARRANTY PROVIDED HEREIN, TO THE EXTENT PERMITTED BY LAW, SLATOR DISCLAIMS ALL WARRANTIES, EXPRESS OR IMPLIED, INCLUDING ALL WARRANTIES OF MERCHANTABILITY AND/OR FITNESS FOR A PARTICULAR PURPOSE. TO THE EXTENT THAT ANY IMPLIED WARRANTY MAY NONETHELESS EXIST BY OPERATION OF LAW, ANY SUCH WARRANTY IS HEREBY LIMITED TO THE DURATION REQUIRED BY SUCH LAW.

SOME STATES/PROVINCES DO NOT ALLOW LIMITATIONS ON THE DURATION OF AN IMPLIED WARRANTY, SO THE ABOVE LIMITATION MAY NOT APPLY TO YOU.

ACKNOWLEDGEMENT OF INTENDED USE/PURPOSE

The V-1 anchor should only be installed by a competent roofer with the knowledge, experience, and ability to locate rafters and securely install the 4" TimberLok Structural Wood Screws. Failure to securely attach this device significantly increases the risk of serious injury and/or death. Inspect for damage and proper installation before every use. Damaged, fatigued, bent or heavily stressed brackets must be discarded immediately. THIS DEVICE IS NOT INTENDED FOR ANY USE OR PURPOSE OTHER THAN THOSE SPECIFICALLY ADVERTISED BY SLATOR, LLC.

LIMITATION OF LIABILITY

By accepting these terms and conditions, you acknowledge, accept, and agree that roofing involves inherent risks including, but not limited to: all manner of injuries resulting from falling, rope abrasions or entanglement, failure or misuse of harnesses, and negligent or accidental actions of other people.

REPAIR OR REPLACEMENT OF THIS PRODUCT, AS PROVIDED HEREIN, IS YOUR EXCLUSIVE REMEDY. SLATOR, LLC SHALL NOT BE LIABLE FOR ANY SPECIAL, INCIDENTAL, OR CONSEQUENTIAL DAMAGES, INCLUDING, BUT NOT LIMITED TO, LOST REVENUES, LOST PROFITS, RENTAL OR REPLACEMENT OF EQUIPMENT, DOWNTIME, DAMAGE TO PROPERTY, AND THIRD-PARTY CLAIMS ARISING OUT OF ANY THEORY OF RECOVERY, INCLUDING WARRANTY, CONTRACT, STATUTE, OR TORT. NOTWITHSTANDING THE TERM OF ANY LIMITED WARRANTY OR ANY WARRANTY IMPLIED BY LAW, OR IN THE EVENT THAT ANY LIMITED WARRANTY FAILS OF ITS ESSENTIAL PURPOSE, IN NO EVENT WILL SLATOR'S LIABILITY EXCEED THE PURCHASE PRICE OF THIS PRODUCT.

SOME STATES/PROVINCES DO NOT ALLOW THE EXCLUSION OR LIMITATION OF INCIDENTAL OR CONSEQUENTIAL DAMAGES, SO THE ABOVE LIMITATION OR EXCLUSION MAY NOT APPLY TO YOU.

GOVERNING LAW

In the event of litigation, both parties agree that the laws of the Commonwealth of Virginia shall apply and both parties shall consent to the jurisdiction of the courts of the city of Lynchburg in the Commonwealth of Virginia, or in the event of diversity of citizenship, the United States District Court for the Western District of Virginia. Both parties expressly waive a trial by jury.

INDEMNIFICATION

You agree to indemnify, defend, and hold harmless SLATOR, LLC, its members, employees, agents, licensors and suppliers from and against all losses, expenses, damages and costs, including reasonable attorneys' fees, resulting from any violation of these Terms and Conditions.

Slator, LLC: V-1 Anchor Installation Instructions

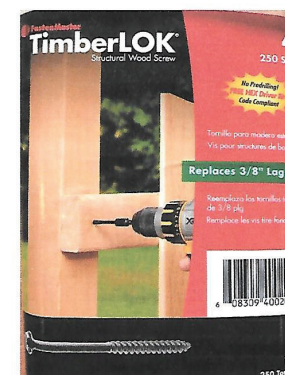
*Our **best safety practice** is having our workers trained for the task at hand, not rush, not become distracted, and remain attentive to their safety, potential hazards, others who might come into a danger zone. We embrace "If we can't do it safely, then we haven't yet prepared for the job", and "If we can give ourselves safe access, then our talents can truly be transferred to the job at hand, and that's really, what our clients want."*

These roofing practices with V-1, SLATOR, and SLATOR-Mini have kept us working safely for years, we recommend you review them, and then modify them to suit your own needs, environment and risk tolerance.

We examine and prepare the site for any hazards such as uneven or slippery terrain, power lines, objects that might impale us if we should fall, objects that could be hit or broken by a falling object. We place our ladders on firm surfaces and secure them with straps to prevent them from moving. We “quarantine” the area below where we are working with caution tape so that people will not accidentally walk into an area that might have falling objects ... nails, hammers, slate, etc ... We use fiberglass ladders whenever the ladder can come within falling distance of a power line. We extend the ladder 3 rungs past the eve and use ladder “stand-offs” (for our ground access ladder) whenever possible to help keep the top of the ladder more stable for access over the roof eve. Oftentimes, we will secure the top of our ladder to the SLATOR, or V-1 anchor as well with a sling and carabiner. Photos, videos and gear are available at www.slator-usa.com. We use scaffolding with guard rails and set up a workstation high near the work area whenever reasonable.

FastenMaster's 4" hex drive Timberlok Structural Wood Screw are the ONLY APPROVED fasteners for use with the V-1 Anchor.

In order to meet OSHA's 5,000 pound anchor requirement, all 6 fasteners must penetrate through the roof sheathing and 3" into a solid roof rafter. Because metal fatigues (weakens with repeat use), new fasteners must be used for each installation.



Congratulations!

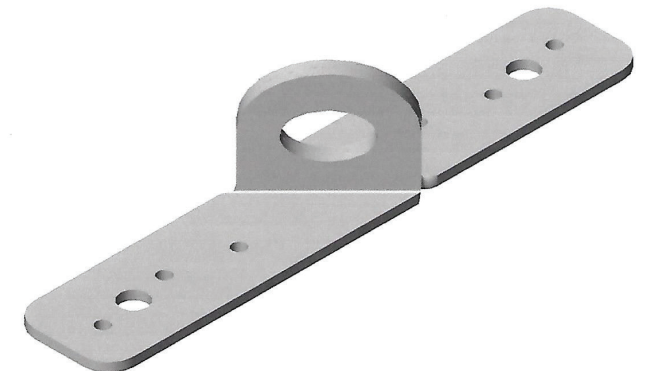
Thank you for purchasing the patent-pending V-1 anchor point from SLATOR, LLC.

www.slator-usa.com

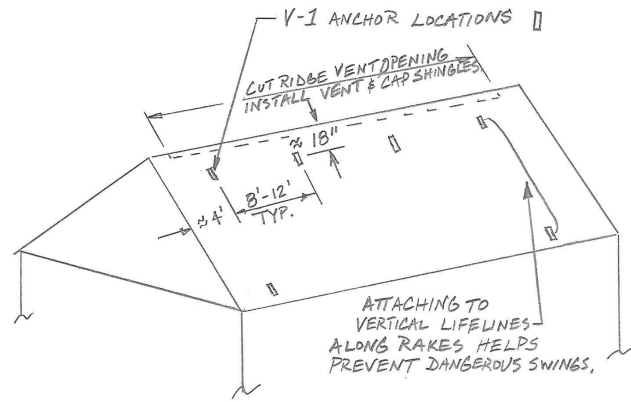
We designed these products for our own safety, and still use them daily. They help us work more safely and efficiently. Once we establish safe working conditions, then we can provide our client with our best work ... every time. We hope that our products will help you do the same thing!

WARNING! WORKING AT HEIGHTS IS DANGEROUS AND MAY BE DEADLY. It should only be done by those with proper training. Please read this manual and have your employees read it also.

You may also download the installation instructions and test from our website.



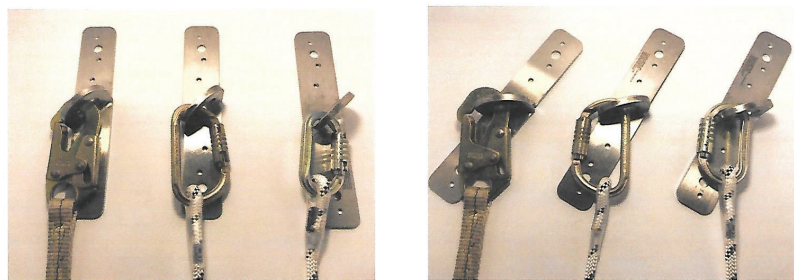
One of the main advantages of using the V-1 anchor is that with proper planning, the ridge vent and cap shingles can be easily and safely done while the roofer still has fall protection.



Although it is preferable to have the anchor point in the line of sight, the V-1 anchor system may be used to work over the ridge at certain times.

1. The user must be attentive, skilled and approved by the jobsite's competent person.
2. The rope must be carefully inspected prior to each use for any damage and protected from any sharp edges by a device such as Petzl's PROTEC or similar system.
3. The connectors/carabiners must maintain proper position - so that any load or fall will not improperly load the connector's gate. (See diagrams below for proper and improper loading).
4. The rope must be tight (no slack) at all times.
5. A back-up fall protection rope should be considered and a site-specific rescue plan should be quickly implemented when necessary.

Proper and Acceptable Loading positions



IMPROPER LOADING of Connector Gates



NO!

The following Petzl gear is also recommended for use with the V-1 Anchor as part of an efficient safety and access system. The user should be trained in the use of each piece of equipment and understand the limitations of each piece of gear.

Rope protectors



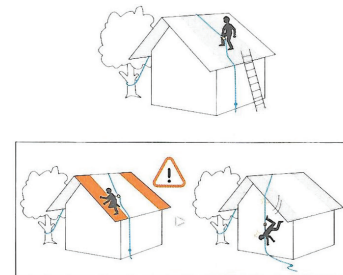
PROTEC
Flexible protection
Flexible PROTEC protection helps protect a fixed rope from abrasion. It is quick and easy to install.



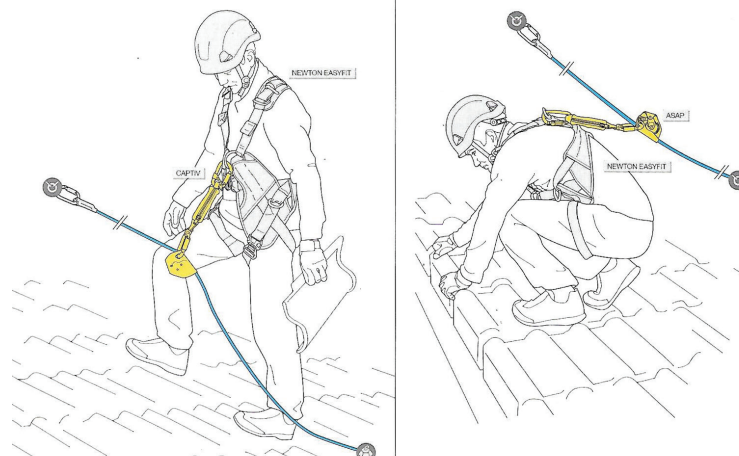
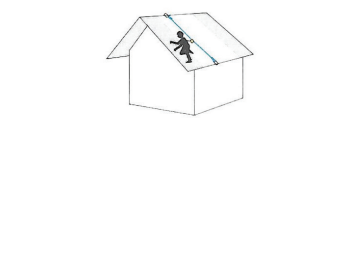
Available in 6 colors

VERTEX® VENT
Comfortable ventilated helmet for work at height and rescue
With its strong chinstrap, the VERTEX VENT helmet sets the standard in head protection for workers at height. It has ventilation holes with sliding shutters to allow the ventilation to be adjusted as needed. Its six-point textile suspension ensures maximum comfort, and its CenterFit adjustment system adjusts the headband and keeps the helmet centered on the head. The VERTEX VENT is designed for optimal attachment of a PIXA or DUO headlamp, a VIZIR, VIZIR SHADOW or VIZEN protective shield, and hearing protection.

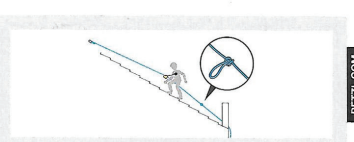
3. Occasional use
With individual fall arrest system.
• Working in the center of the roof (limited access zone)



• Working at the edges



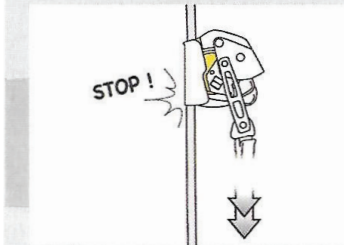
To learn more about using the ASAP on an incline, see technical information available at Petzl.com



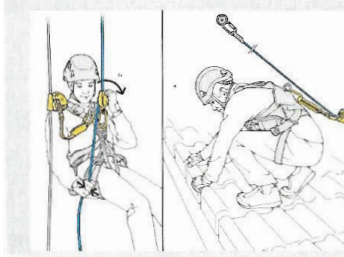
Information is non-proprietary. Refer to the other pages as well as to the instructions for use and technical manuals. Technical training is essential. PETZL.COM

Installed on a safety rope, the ASAP and ASAP LOCK mobile fall arresters connect to the harness sternal or dorsal attachment point. They follow the user in his or her movements, and, in case of a shock load or sudden acceleration, they lock and stop the fall.

• Constant fall protection



Integrated locking
In case of a sudden movement due to a fall, slide or uncontrolled descent, the ASAP and ASAP LOCK mobile fall arresters lock on the rope and stop the worker's fall, even if s/he grabs the device with his/her hands.



Effective in any situation
These mobile fall arresters work equally well on vertical or angled ropes, to adapt to any worksite situation.

• For protection against falls



The ASAP LOCK has a locking function to reduce the length of a fall. Additionally, it is drop-resistant when passing intermediate anchors. It is used with an ASAPSORBER energy-absorber.

NEW 2018
ASAP LOCK



B071BA00

ANSI 2359.15
when used with an ASAPSORBER (international version) or ASAPSORBER AXESS energy absorber, an OXAN TRIACT-LOCK (international version) carabiner, CAPTIV positioning bars, and a RAY 12 mm rope with a sewn termination.
CE EN 12841 type A
when used with an ASAPSORBER (European or international version) or ASAPSORBER AXESS energy absorber, and an EN 1891 type A 10 to 13 mm rope.
CE EN 353-2
when used with an ASAPSORBER (European or international version) energy absorber and an AXIS 11 mm or PARALLEL 10.5 mm rope with a sewn termination.
EAC
when used with an ASAPSORBER (European version) or .IASAPSORBER AXESS energy absorber, and an EN 1891 type A 10 ta.13 mm rope.

High-strength carabiners

Steel carabiners suitable for difficult environments, primarily used for setting up anchors and for connecting to metal structures.



RAY 12 mm with sewn termination Static rope with sewn termination for ASAP (international version) or ASAP LOCK

The RAY 12 mm static rope with sewn termination is designed for use with an ASAP (international version) or ASAP LOCK mobile fall arrester. The standard diameter ensures a good grip for easier handling. It has low stretch when put under tension, allowing it to meet the requirements of U.S. fall protection standards. The sewn termination with protective sheath helps keep the connector in position and facilitates handling. Rope available in five lengths.

NEW 2018



From 2018 Petzl Catalog